

PLEASE CHECK WWW.MOLEX.COM FOR LATEST PART INFORMATION

Part Number: [0002081202](#)
Status: **Active**
Overview: [disk drive power connector](#)
Description: Disk Drive Power Connection System, Female Crimp Terminal, Bag, Phosphor Bronze, 14-20 AWG

Documents:

[Drawing \(PDF\)](#) [RoHS Certificate of Compliance \(PDF\)](#)
[Product Specification PS-8981-4M*/4P* \(PDF\)](#)

General

Product Family	Crimp Terminals
Series	8980
Crimp Quality Equipment	Yes
MolexKits	Yes
Overview	disk drive power connector
Product Name	Disk Drive Power

Physical

Durability (mating cycles max)	50
Gender	Female
Material - Metal	Phosphor Bronze
Material - Plating Mating	Tin
Material - Plating Termination	Tin
Packaging Type	Bag
Plating min: Mating (µin)	35
Plating min: Mating (µm)	0.89
Plating min: Termination (µin)	35
Plating min: Termination (µm)	0.89
Termination Interface: Style	Crimp or Compression
Wire Insulation Diameter	2.03-2.74mm (.080-.108")
Wire Size AWG	14, 16, 18, 20
Wire Size mm ²	N/A

Material Info

Old Part Number 8980-3L

Reference - Drawing Numbers

Product Specification	PS-8981-4M*/4P*
Sales Drawing	SD-8980-3*

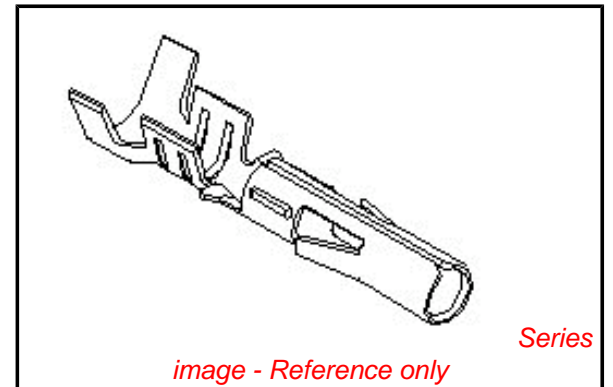


image - Reference only

EU RoHS

ELV and RoHS Compliant
REACH SVHC
Contains SVHC: No
Halogen-Free Status

China RoHS



Need more information on product environmental compliance?

Email productcompliance@molex.com
 For a multiple part number RoHS Certificate of Compliance, [click here](#)

Please visit the [Contact Us](#) section for any non-product compliance questions.

Search Parts in this Series

[8980Series](#)

Use With

[8981P](#)

Application Tooling | FAQ

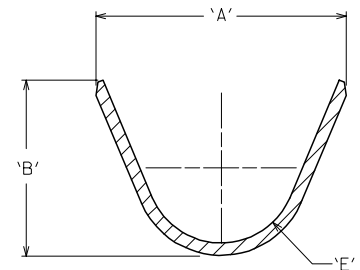
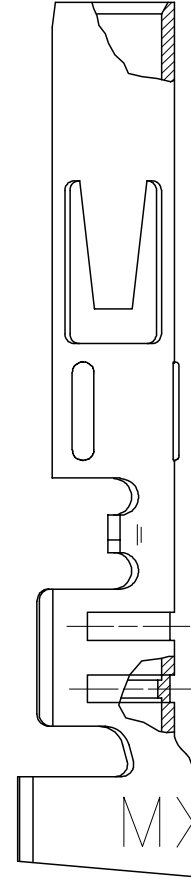
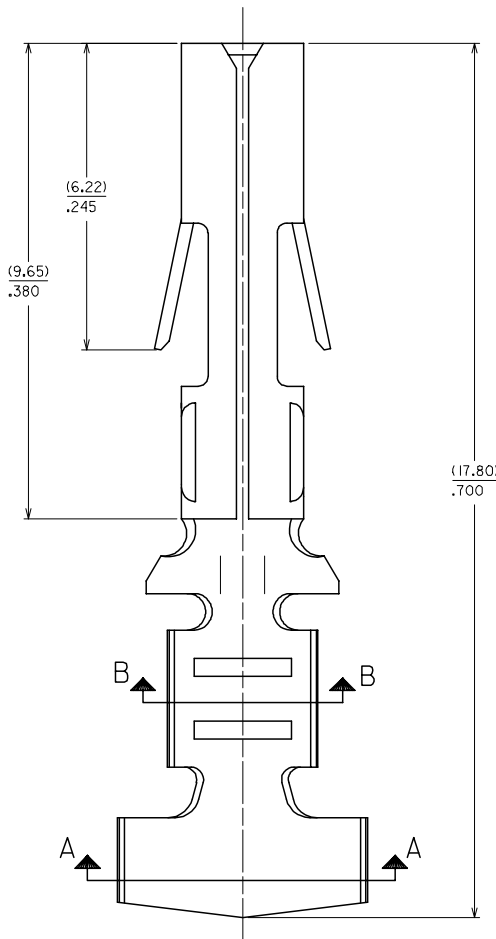
Tooling specifications and manuals are found by selecting the products below. Crimp Height Specifications are then contained in the Application Tooling Specification document.

Global

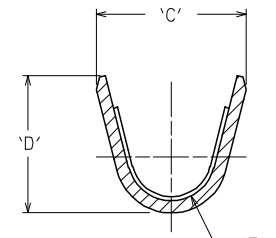
Description	Product #
Extraction Tool	0011030037
Terminator Die	0011402274
Terminator Die	0011402275
Terminator Die	0011402282
Hand Crimp Tool	0638117000

EDP NO.	ENG NO.	FORM	'A'	'B'	'C'	'D'	'E'	'F'
02-08-1201	8980-3C	CHAIN,14-20 AWG WIRE	(4.44)	(3.39)	(3.02)	(3.61)	(1.23)	(0.61)
02-08-1202	8980-3L	LOOSE,14-20 AWG WIRE	.175	.133	.119	.142	.048	.024

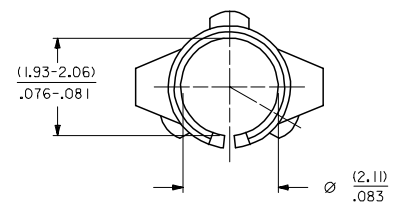
- NOTES:
 1. FINISH: (.00089)/.000035 MN. TIN OVER
 (.00051)/.000020 MIN COPPER (COPPER PLATE REFLOWED)
 2. MATERIAL: (.025)/.010 THK PHOS
 BRONZE, ALLOY CA 51000.



SECTION A-A



SECTION B-B



OBS060702	EC NO: S2007-0797	2007/03/30
	DRWN:GEMARLY	2007/04/03
	CHKD:SKANG	2007/04/03
	APPR:MLONG	2007/04/03
REV	DESCRIPTION	

QUALITY SYMBOLS	
	=0
	=0
GENERAL TOLERANCES (UNLESS SPECIFIED)	
4 PLACES	± .010
3 PLACES	± .010
2 PLACES	± 0.25
1 PLACE	± .010
ANGULAR ± 1 °	
DRAFT WHERE APPLICABLE MUST REMAIN WITHIN DIMENSIONS	

DIMENSION STYLE	
MM/IN	
DRAWN BY	DATE
TAY	1987/12/15
CHECKED BY	DATE
AT	1987/12/15
APPROVED BY	DATE
AB	1987/12/15
MATERIAL NO.	
SEE TABLE	
SIZE	
A3	

SCALE	DESIGN UNITS	THIRD ANGLE PROJECTION	
NTS	METRIC		
TITLE			
TERMINAL SOCKET			
DIA. (2.096)/.0825			
MOLEX INCORPORATED		SHEET NO.	
SD-8980-3*		1 OF 1	
DOCUMENT NO.		MATERIAL NO.	